

Create your Web site with Dreamweaver

John Montét

montetj@westernnc.edu

608.397.3801



Last Week

- Introductions
- Course overview
- Dreamweaver interface
- How the Web works
- Parts of a Web page
- XHTML – what it is

This Week

- Saving and naming a file
- Dreamweaver “Sites”
- Standard XHTML tags
- Basic page changes
- Beginning CSS
- Images
- If we have time
 - JavaScript!

Saving and Naming

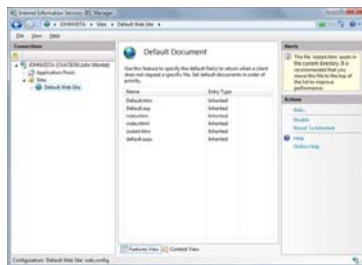
Not so much rules as guidelines



Naming Conventions

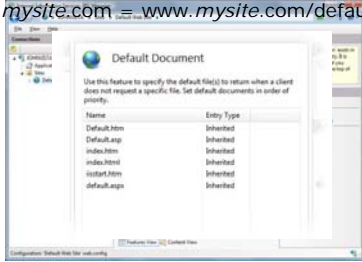
- Alpha-numeric only
 - Underscores (_) are okay
- Should start with a letter
 - More for possible third-party software
- Server-side code (PHP, ASP.NET, etc) determines extension
 - .php, .aspx, .asp, etc...
- Home pages should be
 - Default.html
 - Index.html
- Capitalization *may* count!

Home Pages



Home Pages

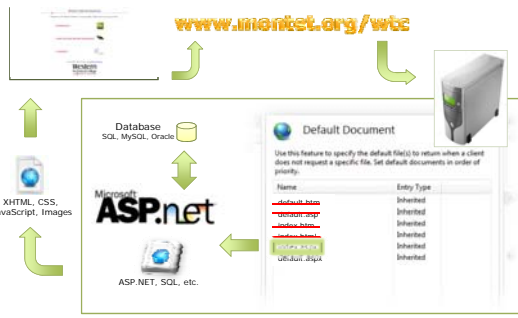
www.mysite.com = www.mysite.com/default.htm



Extensions

- .html – good!
- .htm – okay too
- Server-side Coding extensions:
 - .asp – ASP extension
 - .php – PHP extension
 - .aspx – ASP.NET extension
 - .cfm – ColdFusion extension
 - .jsp – JavaServer extension

Server-Side Coding – “the code”



Examples of Names

- Home.aspx
- Chapter02.html
- about_us.html
- my_underscores_are_getting_out_of_hand.php
- TypesOfTea.asp
- PageOne.cfm

Dreamweaver “Sites”

The best thing about
Dreamweaver

Dreamweaver Sites

- Completely different from “Web sites”
- Dreamweaver file organization
- Allow for different site locations
 - Local – where you create/edit your files
 - Remote – your remote server on the Web
 - Testing – a place to test server-side code
- Makes it easy to publish

Building a Dreamweaver site

EXERCISE 2.1

Exercise 2.1

- Visit www.montet.org/wtc
- Click on Dreamweaver I
- Click on "Exercise 2.1"

Standard XHTML tags

The good, the bad, and the ignored

XHTML Tags

- Start "<"
- End with ">"
- Must be closed
 - <p></p>
 -
- Must be in lower-case
- Must be nested properly
 - <p>some text...</p>

XHTML Tags

- Tags can have attributes
- Attributes redefine the tag
-
 - "src" is the attribute
 - Defines what image to show
- <p style="color:red;">text</p>
 - style is the attribute
 - Colors text in paragraph red

XHTML Tags

- Common tags:
 - <p> paragraph
 - <h1> heading (**h1** – h6)
 -
 line break
 - bolding (usually)
 - emphasizing (italics)
 - <div> division or block of space
 - just used for declarations
 - places an image on the page

Standard tags

```
<!DOCTYPE html PUBLIC "-//W3C//DTD XHTML 1.0 Transitional//EN"
"http://www.w3.org/TR/xhtml1/DTD/xhtml1-transitional.dtd">
```

- **<DOCTYPE>**
 - Tells browser language type
 - Three kinds of XHTML
 - Strict – when you want to be very sure of the code
 - Transitional – still use HTML display properties
 - Frameset – to use frames **shiver**
 - Is not XHTML – doesn't need to close

Standard tags

```
<html xmlns="http://www.w3.org/1999/xhtml">
```

- **<html></html>**
 - Defines where HTML or XHTML code lives
 - Where ALL the content goes
 - xmlns attribute declares *namespace*
 - Required by XHTML standards
 - Happy if left alone

Standard tags

- **<head></head>**
 - Page information and linking
 - Home to
 - <meta> - info about the page
 - <title> - the title of the page
 - <script> - browser-side code (e.g. JavaScript)
 - <link> - connection to CSS et al

Standard tags

- `<body></body>`
 - Place for almost all visible content
 - Always required

Creating a Web Page
EXERCISE 2.2

Exercise 2.2

- Visit www.montet.org/wtc
- Click on Dreamweaver I
- Click on "Exercise 2.2"

Adding some format

CLASS EXERCISE

Beginning CSS

How to use a brush/hammer/hatchet

CSS – What it is

- Adds design to a site
- Adds structure to a site
- Made up of *rules*
 - Several rules together compose a *style*

CSS – What it is

- This style declares
 - The font-family
 - The font size
 - The font color

```
body {
  font-family: Verdana, Arial, Helvetica, sans-serif;
  font-size: 12px;
  color: #333333;
}
```

CSS – What it is

- Three types of styles

- Tag styles

```
body {
  font-family: Verdana, Arial, Helvetica, sans-serif;
  font-size: 12px;
  color: #333333;
}
```

- Classes (.)

```
.verdana-text {
  font-family: Verdana, Arial, Helvetica, sans-serif;
  font-size: 12px;
  color: #333333;
}
```

- ID's (#)

```
#verdana-text {
  font-family: Verdana, Arial, Helvetica, sans-serif;
  font-size: 12px;
  color: #333333;
}
```

CSS – What it is

- Three types of styles

- Tag styles

```
body {
  font-family: Verdana, Arial, Helvetica, sans-serif;
  font-size: 12px;
  color: #333333;
}
```

- Classes (.)

```
.verdana-text {
  font-family: Verdana, Arial, Helvetica, sans-serif;
  font-size: 12px;
  color: #333333;
}
```

- ID's (#)

```
#verdana-text {
  font-family: Verdana, Arial, Helvetica, sans-serif;
  font-size: 12px;
  color: #333333;
}
```

CSS – Where is it

- External style sheet

```
<link href="styles.css" rel="stylesheet" type="text/css" />
```

- Linked in <head> tag
- Changes affect all linked documents

- Embedded styles (at top of page)

```
<style type="text/css">.sampleclass {color: #FF0000;}</style>
```

- Found just before closing </head> tag
- Changes affect only that page

CSS – Where is it

- In tag's *style* attribute

```
<p style="color: #FF0000">This text is red.</p>
```

- Block-element tags are best
 - <div>, <p>, <body>, <td>
- Inline-elements may too
 - , ,
 - Should be avoided
- Changes affect only the tag

CSS – The Cascade

- The closer the style is to the content, the more powerful it is.

- Linked style sheet

- Least weight - greatest flexibility

- Embedded styles

- More weight – less flexibility

- Style attribute

- Most weight – least flexibility

Stylin' the Jabberwocky

CLASS EXERCISE

Images

Lossy to Lossless

JavaScript

It isn't programming,
but it sure is fun!
