
EXERCISE 2.1 – CREATING A DREAMWEAVER SITE

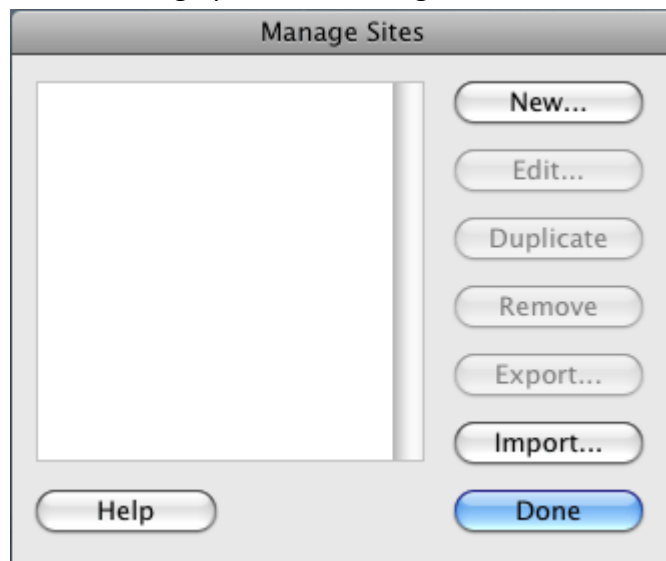
In this Exercise, you will create a Dreamweaver Site. These sites are used to organize Web pages into a cohesive group. This allows Dreamweaver to know what pages are associated with one another.

For example; if you change the filename of a page, Dreamweaver will offer to look at all the pages in the site and update the links pointing to the page whose name you just changed.



Note: you will need to create a folder called "wwwroot" in a location of your choosing – either a thumb drive, network location, or on your computer's desktop – to do this exercise. This is your *development folder*.

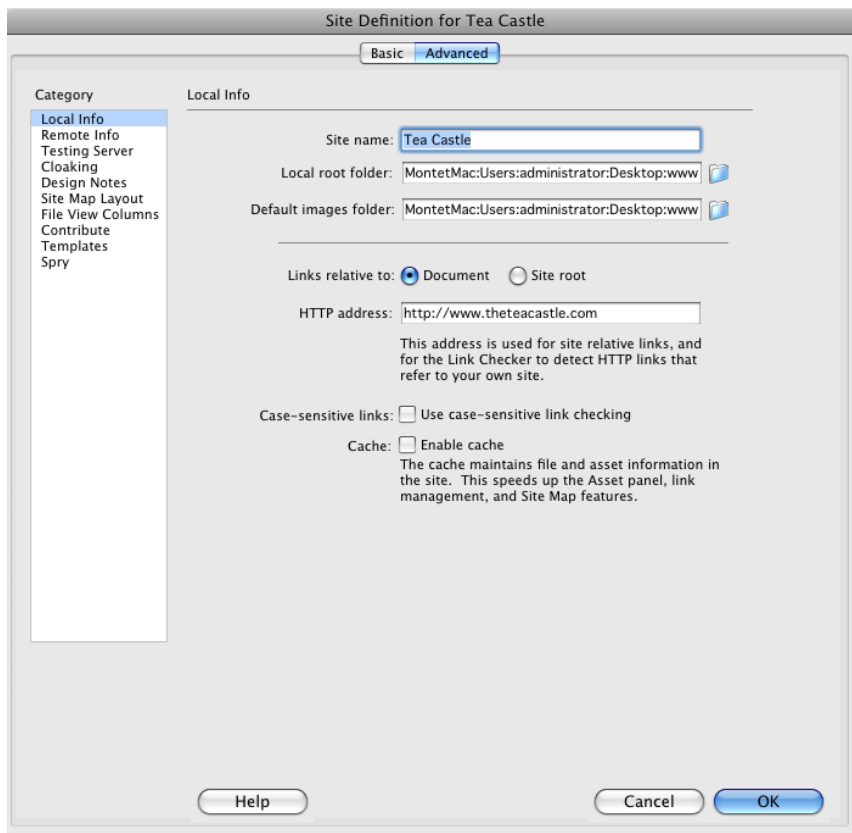
PART 1. CREATING THE SITE

1. Locate or create a folder (see note) where your development Web site files are located
2. Open Dreamweaver
3. For reference, notice how the **Files** panel displays locations in the computer, such as the hard drive and Desktop
4. From the *Menu*, choose **Site > Manage sites**
 - a. This will bring up the site manager window



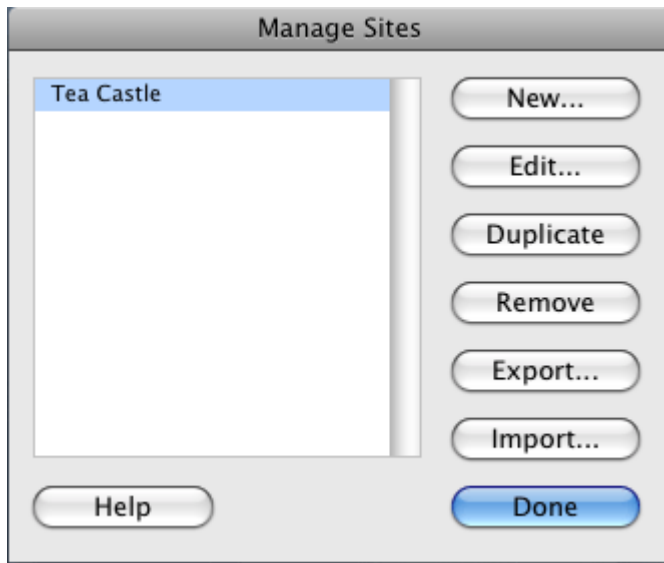
5. Click **New...** Choose **Site**
 - a. This brings up the **Site Definition** window
6. Choose **Advanced** at the top of the window
 - a. Be sure that under **Category**, **Local Info** is highlighted

7. Under **Site name:**, type "Tea Castle"
8. Click the folder  icon next to the **Local root folder:** text box
 - a. Navigate to your development folder (e.g. "wwwroot")
 - i. This is the folder where you will save all of the files that make up your Web site
 - b. Click on your development folder
 - c. Click the **Choose** button
9. Click the folder icon  next to the **Default images folder:** text box
 - a. If you already have an images folder, click on the folder to select it
 - b. If you do not have an images folder, place one inside the wwwroot folder –
 - i. Select the wwwroot folder, then click the **New Folder** button
 - ii. Name your folder "images" and click **Create**
 - c. Click **Choose**
10. Under **Links relative to:**, make sure "Document" is selected
11. Under **HTTP address:**, type http://www.theteacastle.com
12. Be sure that **Case-sensitive links:** is unchecked
13. Uncheck the **Cache** checkbox
14. Your site form should now look like this:



15. Click the **OK** button

16. You should now see the "Tea Castle" Site in the **Manage Sites** window



17. Click **Done**

18. Note that your **Files** Panel now shows the "Tea Castle" site rather than computer locations

PART 2. SAVING THE SITE SETTINGS

This section will show you how to save a Dreamweaver Site so that it can be transferred to another computer. This is necessary for this class as your site will be destroyed when the lab is reset each night.

1. Choose **Site > Manage Sites** from the Dreamweaver Menu
2. Click on the "Tea Castle" site to select it
3. Click **Export**
4. Be sure the **Save As:** text box says "Tea Castle.ste"
5. Be sure if the **Where** text box says "wwwroot"
 - a. If it does not, navigate to that folder
 - b. Click **Save**
6. Your Dreamweaver site is now saved as an .ste file
 - a. Note that the files are still located in the "wwwroot" folder and are not part of the .ste file
 - b. This means that you can now import your site at the beginning of each class
 - c. This prevents you from have to do "Part 1" of this exercise each class
 - d. Instead, you can "Import your Dreamweaver Site", as outlined below

PART 3. IMPORTING YOUR SITE

This step isn't necessary unless you are working in a lab environment, or if you switch to developing on a new computer. If you have saved a .ste file (Part 2), you can import the site using this file and save the hassle of recreating your site (Part 1).

1. Choose **Site > Manage Sites** from the Dreamweaver Menu
 - a. If "Tea Castle" appears in the list of Sites, it has already been created and you do not need to proceed
 - i. If this is the case, click **Done**
2. Click **Import...**
3. Locate the "Tea Castle.ste" file
 - a. Click on the file to select it
 - b. Click **Open**
4. "Tea Castle" should now appear in the list of Sites
 - a. Be sure it is selected
5. Click **Done**